

PO17 Roman Lusitania

A circular tour around the ancient Roman province of Lusitania, this trip will show you the similarities and contrasts between two regions with a common past.

From charming Lisboa passing through the lesser-known gems of the Alto Alentejo into Spain, enjoy the amazing Roman vestiges in the Portuguese city of Évora and neighbouring Spanish Mérida.

Once in Spain, take the opportunity to discover its least known province - Extremadura - with an immense wealth of truly unique experiences - historical, natural and gastronomical.

Explore the Sierra de Gredos and Salamanca and their splendid valleys before "jumping" into the Serra da Estrela mountains. End your trip by the sea in the spectacular Atlantic beaches of the Portuguese coast.

Itinerary Overview:

Stage	Itinerary	Nights	Location	Services	Drive Time
1	Day 1 to 3	2 nights	Lisboa, Lisboa	HLIS5 3-star Hotel 1 x Twin/Double	30mins from Lisboa airport
2	Day 3 to 6	3 nights	Alentejo Central, Évora	HEVO1 4-star Hotel 1 x Twin/Double	1hr 30mins from airport (car hire pick-up)
3	Day 6 to 9	3 nights	Castilla La Mancha, Trujillo	HTRU1 4-star Hotel 1 x Twin/Double	2hrs 30mins
4	Day 9 to 11	2 nights	Extremadura, north, Hervás	HHER2 Family-run Posada 1 x Twin/Double	1hr 40mins
5	Day 11 to 13	2 nights	Serra da Estrela, Manteigas	HSDE1 Boutique-Hotel 1 x Twin/Double	3hrs 20mins
6	Day 13 to 15	2 nights	Extremadura, the Monastery Towns, Batalha	HBAT1 Boutique-Hotel 1 x Twin/Double	3hrs 10mins

Includes:

- Accommodation in our listed hotels - 2 sharing 1 std. double ensuite, B&B
- Economy 4-door car hire from leaving Lisboa
- Guide book to Portugal
- [Personal Travel App](#) including highlights, weather forecast and restaurant suggestions for all areas en-route
- Instructions to find all accommodation

Excludes:

- Flights - but we are able to advise
- One-way car hire charges, where applicable (see your quote email)
- The following car hire extras - these can be added at pick-up point
 - extra driver
 - child seats
 - GPS
- Parking fees where applicable (mostly city stops, unless specifically included) - please ask us about parking charges
- Local tourist taxes where applicable

Stage 1

Lisboa



Highlights

Hop a tram and explore Portugal's exciting capital

Rossio square and train station

Skip out to Sintra, and the beaches of Cascais & Aldeia do Meco

Bar hop in Bairro Alto, dine in style in Chiado

Mosteiro dos Jerónimos - a Manueline delight

HLIS5 3-star Hotel, Lisboa

[See full details](#)

Accommodation: 1 x Twin/Double, B&B



This delightful, classic hotel stands in one of Lisbon's prettiest and leafiest squares - "The Square of Joy", dedicated to the famous artist, Alfredo Keil.

Dating back to 1865, it has been very recently renovated and refurbished to maintain its former Portuguese charm, yet providing all of the comforts we expect today.

Set in the San Antonio district with a real Portuguese ambiance, it is an easy walk to the city's most important landmarks, including Rossio, Baixa, Chiado, Principe Real and Bairro Alto, featuring a great choice of restaurants and bars. The metro and bus stops are close at hand too.



Main facilities	• 24 hour reception • Activity/tour booking service • Wi-Fi all areas
Room facilities	• En-suite bathroom • Air conditioning • Tea/coffee making facilities
Dining	• Restaurant, open to the public • Bars/restaurants within walking distance of the hotel
Room types	• Deluxe, superior deluxe and mansard (double / twin) rooms; junior suites and master suites • Room(s) adapted for guests with reduced mobility
Other	• On-street parking • Public parking nearby (pay locally) • No pets allowed

Stage 2

Alentejo Central



Highlights

World Heritage cities of Évora and Elvas, Roman ruins, medieval walls

Alentejo wines, Portugal's finest

Hilltop fortress town of Monsaraz and nearby wine centre Reguengos

Pottery towns among the vines El Corval and Redondo

"Marble towns" of Borba, Vila Viçosa and Estremoz

HEVO1 4-star Hotel, Évora

[See full details](#)

Accommodation: 1 x Twin/Double, B&B



Tucked inside the medieval city walls near the aqueduct, in the enchanting and fascinating city of Évora with its vast array of historical sights, this 16th century olive mill is now a delightful small, elegant and friendly hotel.

With well-appointed spacious, modern rooms, lovely sitting areas with just the right blend of antique and contemporary furniture, a pleasant garden patio and many original parts of the building still intact, it retains the charm of an old house.

The amazing breakfasts too, using locally sourced organic produce, from five different types of bread to free range eggs, are among the region's best.



Main facilities	• 24 hour reception • Activity/tour booking service • Wi-Fi all areas
Room facilities	• En-suite bathroom • Air conditioning
Dining	• Breakfast only • Bars/restaurants within walking distance of the hotel
Room types	• Classic and Prestige doubles and twins; Suites (all doubles) and family room. • Room(s) adapted for guests with reduced mobility
Other	• Garage parking (extra charge) • Pets allows by prior arrangement - please consult

Stage 3

Castilla La Mancha



Highlights

Monfrague National Park - a bird-watcher's paradise with buzzards, vultures and black stork

Historic Cáceres & Trujillo with its imposing castle

Take a pilgrimage to Guadalupe

2nd century Roman bridge at Alcántara

Excellent local cheese and game dishes

HTRU1 4-star Hotel, Trujillo

[See full details](#)

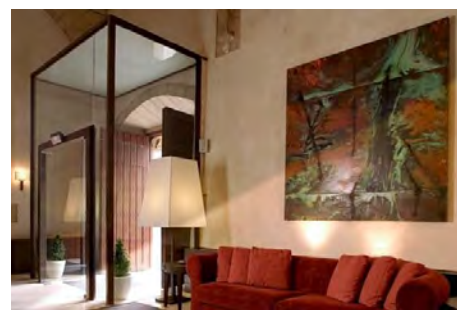
Accommodation: 1 x Twin/Double, B&B



Just off the main square in Trujillo this 16th century palace has been converted into a modern and comfortable hotel whilst keeping its historic charm.

The location is unbeatable, some rooms having views to the castle, others to the historic square or across the rooftops. In the summer the pool area is a refreshing oasis and enjoys excellent rooftop views.

The helpful & friendly staff will make sure you get the most out of your stay in Trujillo.



Main facilities	• 24 hour reception • Wi-Fi all areas • Swimming pool (indoor)
Room facilities	• Air conditioning
Dining	• Breakfast only
Room types	• Double or twin. Superior and suites. • Room(s) adapted for guests with reduced mobility
Other	• On-site parking (free) • No pets allowed

Stage 4

Extremadura, north



Highlights

- Explore the high Sierras of Gredos and Salamanca
- Lose yourself in the Jewish Quarter of Hervás
- Valle del Jerte cherry trees by the million - a real treat in Spring!
- Visit Candelario & Béjar - two true beauties
- Plasencia - key staging point on the Via de Plata

HHER2 Family-run Posada, Hervás

[See full details](#)

Accommodation: 1 x Twin/Double, B&B



Set in an attractive, peaceful square in the heart of old Hervás, this ancestral C19th home, has been sympathetically and lovingly restored to make the lovely, family-run hotel it is today.

Simplicity is the key, but modern comforts are by no means forgotten. Thick stone walls and chestnut beams blend perfectly with period furniture, but what fascinates and gives a special touch are the solid old doors, original keyholes, iron fittings and floor tiles.

Great base for exploring the beautiful Valle de Ambroz and Valle de Jerte.



Main facilities	• Wi-Fi all areas • Spacious grounds
Room facilities	• En-suite bathroom • Air conditioning
Dining	• Breakfast only • Bars/restaurants within walking distance of the hotel
Room types	• Standard double, Double Superior, Junior Suite, Apartment. • Room(s) adapted for guests with reduced mobility
Other	• On-street parking • No pets allowed

Stage 5

Serra da Estrela



Highlights

Walking, cycling, kayaking and much more in the Serra da Estrela Nature Park

Visit the Burel Wool factory in Manteigas

Scale the Torre peak - Portugal's highest

Manteigas and Sabugueiro - charming mountain villages

Rich Jewish heritage and historic castle of Belmonte

HSDE1 Boutique-Hotel, Manteigas

[See full details](#)

Accommodation: 1 x Twin/Double, B&B



A breath of fresh, mountain air, this delightful small hotel-spa at the heart of the Serra da Estrela is full of surprises and is everything a mountain lodge should be, and more.

Direct from the hotel you can enjoy lovely walks through the boulder-strewn sierra to the lake at Rossin, for which full instructions and a picnic can be provided of course, even a kayak to take out on the lake.

At the very centre of the Serra da Estrela it's a practical base to visit the mountains of course, with its highest point at Torre (2000m), as well as the historic towns and villages below; Belmonte, Sabugal, ... if you ever do venture out!



Main facilities	• Activity/tour booking service • Wi-Fi all areas • Swimming pool (indoor)
Room facilities	• En-suite bathroom • Air conditioning
Dining	• Restaurant, open to the public
Room types	• Standard, suites and superior rooms. • Room(s) adapted for guests with reduced mobility
Other	• On-site parking (free) • Electric vehicle charging station • No pets allowed

Stage 6

Estremadura, the Monastery Towns



Highlights

- The magnificent monasteries of Batalha and Alcobaça
- São Martinho do Porto a little pearl set on a string of surf washed Atlantic beaches
- The Convent at Tomar, delightful city of the Templars
- Sierras de Aire y Candeeiros Nature Park - riddled with caves
- Medieval Óbidos with its famous white houses

HBAT1 Boutique-Hotel, Batalha

[See full details](#)

Accommodation: 1 x Twin/Double, B&B



Set in a residential area above the town of Batalha, with its astonishingly beautiful C14th Monastery of Santa Maria da Vitoria, this delightful, family run hotel will embrace you at once with its informal and relaxing atmosphere.

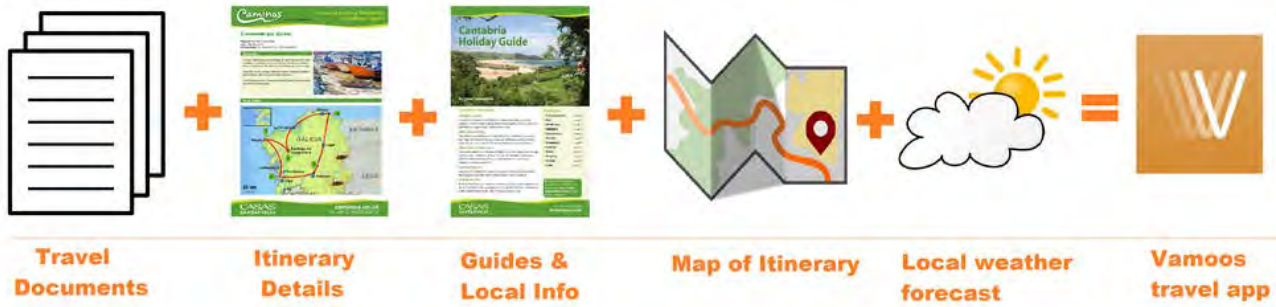
The hotel is light, bright and colourful with a modern, elegant design and the owner's original paintings and objects d'art adding a very special touch. The bedrooms are commodious, most having balconies and some offering spectacular views of the monastery. Not only is the owner an artist, but the she also produces all the homemade jams and honey served at breakfast!

Please note: Outdoor pool seasonal depending on weather conditions.



Main facilities	• Wi-Fi all areas • Swimming pool (outdoor, seasonal) • Swimming pool (indoor)
Room facilities	• En-suite bathroom • Air conditioning • Tea/coffee making facilities
Dining	• Breakfast only • Bars/restaurants within walking distance of the hotel
Room types	• Doubles and twins (some superior with balcony and view); triples and singles; adjoining rooms • Room(s) adapted for guests with reduced mobility
Other	• On-site parking (free) • On-street parking • No pets allowed

Vamoos - your personal travel App and e-Document manager



Travel paper-free with Vamoos

As a Caminos client you will receive your own personal Vamoos travel app and e-document manager for mobile devices. This is a paperless system which allows you to keep all of your important travel documentation and key information in one place and carry it with you

wherever you go. Configured for iPhone and Android, for use on both tablets and mobile phones.

In the app you will find:

- + Your itinerary
- + Your letters and receipts
- + Your ferry voucher / car-hire voucher as applicable
- + Point to point directions
- + Regional guides to the areas you will be visiting
- + A general food and vocab guide
- + A map with each hotel geo located
- + Directions to find each hotel (embedded within the map)
- + Local weather forecast

Also, if you have any other travel documents that you'd like to load to the application you can send them to us and we'll load them on there for you.

What our clients say...

"We loved your Vamoos app - it really enhanced our pre-holiday planning and meant we had everything at our fingertips without having to have WiFi during the trip. The detail provided was exceptional. Everyone should us

"The package included everything we needed from a superb App called Vamoos which included daily routes (offline maps), hotel details and local information to Lonely Planet Guides and ferry and hotel bookings for the tours."

"We particularly liked the Vamoos app which placed all our holiday information - and more at our fingertips"